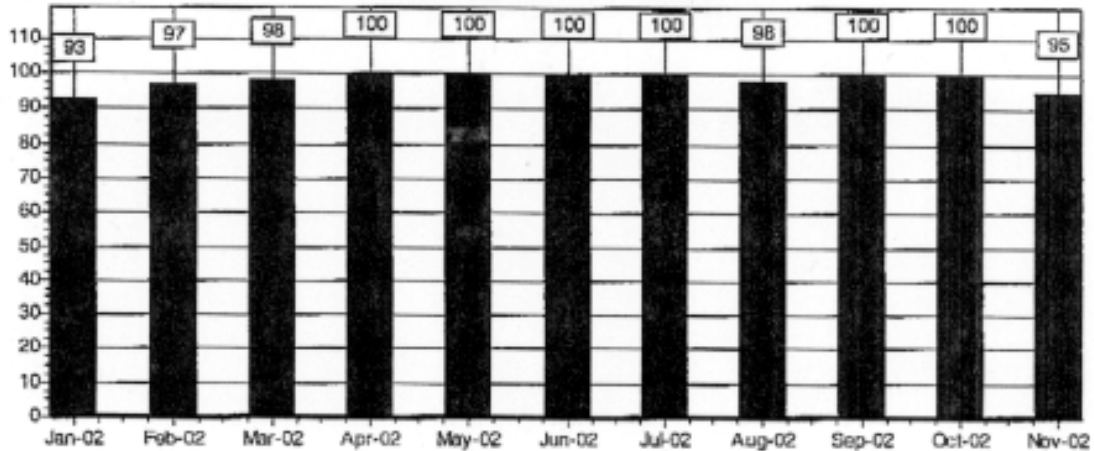


Period To Date 98.07 Target 100.00 %

### Delivery Performance

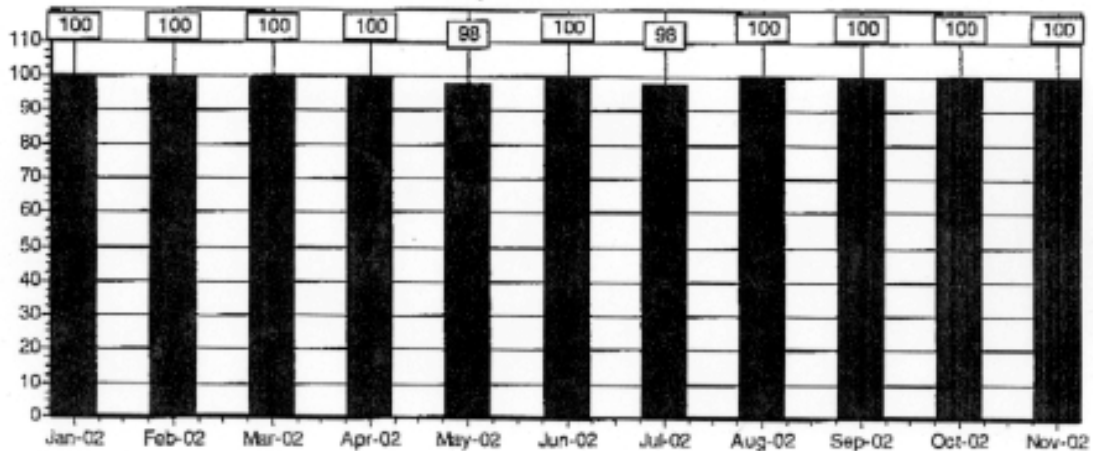


Percent On Time Delivery

Columns marked with an [N/A] had no activity for that month.

Period To Date 99.63 Target 100.00 %

### Quality Performance



Percent Good Deliveries

Columns marked with an [N/A] had no activity for that month.

| CA Number  | PO Number | PO Line Number | Part Number   | Date Created | Date Response Due | Date Extended |
|------------|-----------|----------------|---------------|--------------|-------------------|---------------|
| SN00003351 | STORES    | 0              | 1550306-9     | 02/01/2002   | 03/15/2002        |               |
| SN00003708 | STORES    | 0              | 2531958-3     | 04/26/2002   | 06/10/2002        |               |
| SN00003744 |           | 0              | 5771989       | 05/02/2002   | 06/14/2002        |               |
| SN00003976 |           | 0              | 3176212-A-096 | 06/28/2002   | 08/12/2002        |               |

12/04/2002 10:35  
Darrel Waseen

LA MACHINE SHOP INC

15740 LINCOLN STREET NE

HAM LAKE MN 55304 55304

Quality Assurance Manager: Darrel Waseen

### Monthly Quality and Delivery Performance

This letter depicts the Supplier Performance during the specified period of delivery activity to United Defense L.P. ASD. We sincerely hope that this report will provide useful information for you to assess your own expectations for customer satisfaction. United Defense L.P. ASD utilizes this information to rate our suppliers including those suppliers for whom improvement in delivery or quality is required.

This report details the Supplier Performance for Quality & Delivery to all United Defense L.P. ASD sites. This information is our "Feedback" to you in order that you can improve, if warranted, your service to us. As a Valued Supplier we depend on your ability to support our production needs. This report is but one of several tools we use to determine your viability to remain on our Approved Supplier Listing (ASL).

January-2002 To November-2002

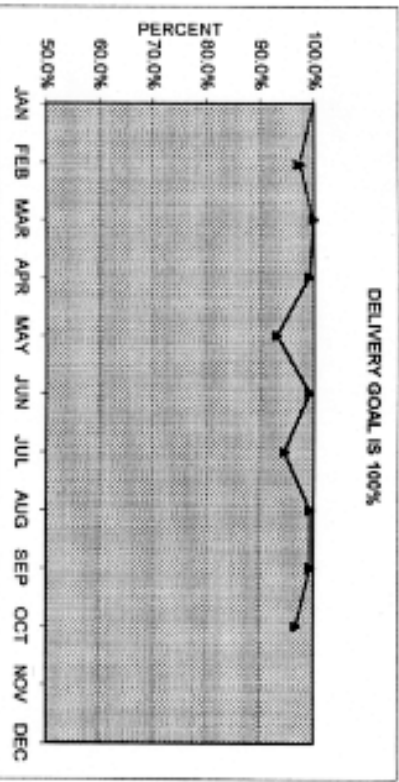
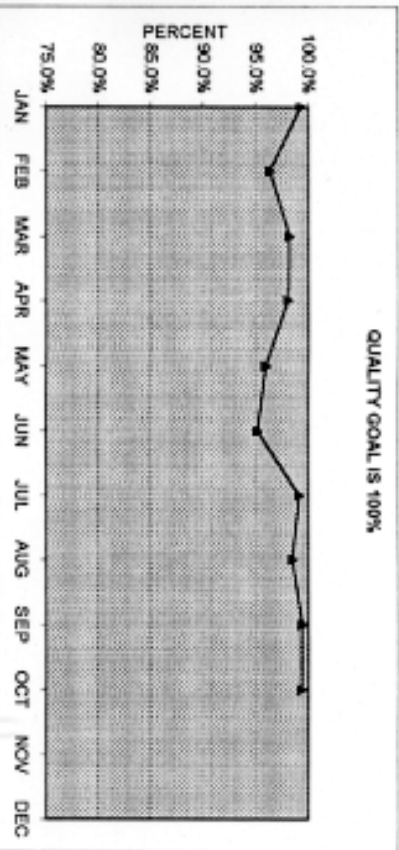
#### Current Month

|                        |                  |                  |
|------------------------|------------------|------------------|
| Lots Received 42       | Lots Early 0     | Lots Late 2      |
| Quantity Received 2704 | Quantity Early 0 | Quantity Late 39 |
| Receiving NCs 0        |                  |                  |
| Production NCs 0       |                  |                  |
| Late Actions 0         |                  |                  |

| Month    | Receiving NCs |                | On-Time Delivery |                   | Late Responses |                  | Overall 1 Month |
|----------|---------------|----------------|------------------|-------------------|----------------|------------------|-----------------|
|          |               | Production NCs |                  | Weighted Delivery |                | Weighted Quality |                 |
| Jan-2002 | 100           | 100            | 93               | 100               | 0              | 100              | 93              |
| Feb-2002 | 100           | 100            | 97               | 100               | 0              | 100              | 97              |
| Mar-2002 | 100           | 100            | 98               | 100               | 0              | 100              | 98              |
| Apr-2002 | 100           | 100            | 100              | 100               | 0              | 100              | 100             |
| May-2002 | 100           | 95             | 100              | 100               | 0              | 98               | 100             |
| Jun-2002 | 100           | 100            | 100              | 100               | 0              | 100              | 100             |
| Jul-2002 | 100           | 96             | 100              | 100               | 0              | 98               | 100             |
| Aug-2002 | 100           | 100            | 98               | 100               | 0              | 100              | 98              |
| Sep-2002 | 100           | 100            | 100              | 100               | 0              | 100              | 100             |
| Oct-2002 | 100           | 100            | 100              | 100               | 0              | 100              | 100             |
| Nov-2002 | 100           | 100            | 95               | 100               | 0              | 100              | 95              |

# LAMACHINE SHOP

| 2002       | JAN   | FEB   | MAR   | APR   | MAY   | JUN   | JUL   | AUG   | SEP   | OCT   | NOV | DEC |
|------------|-------|-------|-------|-------|-------|-------|-------|-------|-------|-------|-----|-----|
| QUALITY %  | 99.3% | 96.4% | 98.3% | 98.1% | 96.0% | 95.2% | 99.2% | 98.5% | 99.5% | 99.4% |     |     |
| DELIVERY % |       |       | 99.9% | 99.2% | 93.2% | 99.2% | 94.5% | 99.4% | 99.4% | 96.8% |     |     |
| # OF M/R'S | 1     | 3     | 2     | 3     | 6     | 6     | 1     | 3     | 1     | 1     |     |     |



Supplier Improvement Program/Action Plan:

Overall Rating:



| Part Number | Purchase Order | Due Date  | Received Date | Days Late | Missed Delivery | Lots Defective  | C of C Problems | RCA Days Late | 07-Nov-02<br>Page 2 |
|-------------|----------------|-----------|---------------|-----------|-----------------|-----------------|-----------------|---------------|---------------------|
| 61315-1     | 169387         | 8/9/2002  | 8/8/2002      | -1        | 0               | 0               | 0               | 0             |                     |
| 1858-2      | 169956         | 8/16/2002 | 8/13/2002     | -3        | 0               | 0               | 0               | 0             |                     |
| 63734-2     | 169518         | 8/21/2002 | 8/16/2002     | -3        | 0               | 0               | 0               | 0             |                     |
| 1858-6      | 169718         | 8/23/2002 | 8/20/2002     | -3        | 0               | 0               | 0               | 0             |                     |
| 1021-1      | 170106         | 8/21/2002 | 8/20/2002     | -1        | 0               | 0               | 0               | 0             |                     |
| 63005-6     | 169840         | 8/23/2002 | 8/20/2002     | -3        | 0               | 0               | 0               | 0             |                     |
| 8074-2      | 170266         | 8/26/2002 | 8/26/2002     | 0         | 0               | 0               | 0               | 0             |                     |
| 1713-8      | 165141         | 8/30/2002 | 8/27/2002     | -3        | 0               | 0               | 0               | 0             |                     |
| 1172-2      | 169652         | 8/1/2002  | 8/27/2002     | 18        | 1               | 0               | 0               | 0             |                     |
| 9476-8A     | 170905         | 9/5/2002  | 8/30/2002     | -3        | 0               | 0               | 0               | 0             |                     |
| 8265-6      | 163179         | 9/6/2002  | 8/30/2002     | -4        | 0               | 0               | 0               | 0             |                     |
| 9617-6      | 169956         | 9/12/2002 | 9/5/2002      | -5        | 0               | 0               | 0               | 0             |                     |
| 40745-6     | 168083         | 9/4/2002  | 9/5/2002      | 1         | 0               | 0               | 0               | 0             |                     |
| 1858-2      | 169956         | 9/5/2002  | 9/5/2002      | 0         | 0               | 0               | 0               | 0             |                     |
| 4395-1      | 170910         | 9/5/2002  | 9/5/2002      | 0         | 0               | 0               | 0               | 0             |                     |
| 40452-1     | 166895         | 9/10/2002 | 9/5/2002      | -3        | 0               | 0               | 0               | 0             |                     |
| 8485-6      | 170014         | 9/4/2002  | 9/5/2002      | 1         | 0               | 0               | 0               | 0             |                     |
| 2151-2      | 170487         | 9/18/2002 | 9/5/2002      | -9        | 0               | 0               | 0               | 0             |                     |
| 6278-2      | 167204         | 9/13/2002 | 9/5/2002      | -6        | 0               | 0               | 0               | 0             |                     |
| 9476        | 170455         | 9/6/2002  | 9/6/2002      | 0         | 0               | 0               | 0               | 0             |                     |
| 8827        | 168684         | 9/10/2002 | 9/6/2002      | -2        | 0               | 0               | 0               | 0             |                     |
| 60916-3     | 170127         | 9/6/2002  | 9/6/2002      | 0         | 0               | 0               | 0               | 0             |                     |
| 1172-2      | 169652         | 9/10/2002 | 9/10/2002     | 0         | 0               | 0               | 0               | 0             |                     |
| 61679-8     | 171117         | 9/11/2002 | 9/11/2002     | 0         | 0               | 0               | 0               | 0             |                     |
| 61146-8     | 171195         | 9/20/2002 | 9/11/2002     | -7        | 0               | 0               | 0               | 0             |                     |
| 1034-2      | 166669         | 9/24/2002 | 9/12/2002     | -8        | 0               | 0               | 0               | 0             |                     |
| 8483-6      | 170493         | 9/13/2002 | 9/12/2002     | -1        | 0               | 0               | 0               | 0             |                     |
| 61679-9     | 170209         | 9/12/2002 | 9/13/2002     | 1         | 0               | 0               | 0               | 0             |                     |
| 63389-8     | 171316         | 9/18/2002 | 9/16/2002     | -2        | 0               | 0               | 0               | 0             |                     |
| 1744-2      | 165579         | 9/27/2002 | 9/16/2002     | -9        | 0               | 0               | 0               | 0             |                     |
| 4274-6      | 167821         | 9/16/2002 | 9/16/2002     | 0         | 0               | 0               | 0               | 0             |                     |
| 1021-1      | 170106         | 9/18/2002 | 9/19/2002     | 1         | 0               | 0               | 0               | 0             |                     |
| 8483-6      | 170493         | 9/23/2002 | 9/23/2002     | 0         | 0               | 0               | 0               | 0             |                     |
| Lot Total   |                |           |               |           | Late Total      | Defective Total | C of C Total    |               |                     |
| 79          |                |           |               |           | 2               | 2               | 0               |               |                     |

|   | QUALITY RATINGS % | Possible Score | OVERALL QUALITY RATING      |
|---|-------------------|----------------|-----------------------------|
| Delivery:                               | 34 %              | 35%            | 98<br>LA MACHINE SHOP, INC. |
| Dimensional:                            | 44 %              | 45%            |                             |
| Certification:                          | 10 %              | 10%            |                             |
| Response to Corrective Action Requests: | 10 %              | 10%            |                             |

# TESCOM Corporation

## Industrial Controls Division

### Supplier Evaluation Report

| Part Number                          | Purchase Order | Due Date  | Received Date | Days Late | Missed Delivery | Lots Defective | C of C Problems | RCA Days Late | 07-Nov-02<br>Page 1 |
|--------------------------------------|----------------|-----------|---------------|-----------|-----------------|----------------|-----------------|---------------|---------------------|
| Supplier Name: LA MACHINE SHOP, INC. |                |           |               |           |                 |                |                 |               |                     |
| 63641-6                              | I69034         | 7/1/2002  | 7/1/2002      | 0         | 0               | 0              | 0               | 0             |                     |
| 4618-2                               | I68590         | 7/1/2002  | 7/3/2002      | 2         | 1               | 0              | 0               | 0             |                     |
| 8482-6                               | I68027         | 7/10/2002 | 7/3/2002      | -3        | 0               | 0              | 0               | 0             |                     |
| 40452-1                              | I66895         | 7/10/2002 | 7/3/2002      | -3        | 0               | 0              | 0               | 0             |                     |
| 61387-6                              | I66471         | 7/15/2002 | 7/3/2002      | -6        | 0               | 0              | 0               | 0             |                     |
| 1857-6                               | I68683         | 7/3/2002  | 7/3/2002      | 0         | 0               | 1              | 0               | 0             |                     |
| 9019-1                               | I69118         | 7/8/2002  | 7/3/2002      | -1        | 0               | 0              | 0               | 0             |                     |
| 40745-6                              | I68093         | 7/2/2002  | 7/3/2002      | 1         | 0               | 0              | 0               | 0             |                     |
| 61336-8                              | I68664         | 7/10/2002 | 7/10/2002     | 0         | 0               | 0              | 0               | 0             |                     |
| 1744-2                               | I65579         | 7/10/2002 | 7/10/2002     | 0         | 0               | 0              | 0               | 0             |                     |
| 9592                                 | I68684         | 7/10/2002 | 7/10/2002     | 0         | 0               | 0              | 0               | 0             |                     |
| 1858-6                               | I68900         | 7/10/2002 | 7/10/2002     | 0         | 0               | 0              | 0               | 0             |                     |
| 60046-6                              | I68900         | 7/10/2002 | 7/10/2002     | 0         | 0               | 0              | 0               | 0             |                     |
| 2313-2                               | I65064         | 7/24/2002 | 7/12/2002     | -8        | 0               | 1              | 0               | 0             |                     |
| 8827                                 | I68684         | 7/11/2002 | 7/12/2002     | 1         | 0               | 0              | 0               | 0             |                     |
| 1034-2                               | I66659         | 7/24/2002 | 7/12/2002     | -8        | 0               | 0              | 0               | 0             |                     |
| 6278-2                               | I67204         | 7/15/2002 | 7/12/2002     | -1        | 0               | 0              | 0               | 0             |                     |
| 1858-6                               | I68900         | 7/25/2002 | 7/15/2002     | -8        | 0               | 0              | 0               | 0             |                     |
| 40755-6                              | I68684         | 7/12/2002 | 7/15/2002     | 1         | 0               | 0              | 0               | 0             |                     |
| 61315-1                              | I69387         | 7/19/2002 | 7/22/2002     | 1         | 0               | 0              | 0               | 0             |                     |
| 8482-6                               | I68664         | 7/19/2002 | 7/22/2002     | 1         | 0               | 0              | 0               | 0             |                     |
| 8265-6                               | I63179         | 7/31/2002 | 7/23/2002     | -6        | 0               | 0              | 0               | 0             |                     |
| 60730                                | I65711         | 8/1/2002  | 7/23/2002     | -7        | 0               | 0              | 0               | 0             |                     |
| 8827                                 | I68684         | 7/25/2002 | 7/23/2002     | -2        | 0               | 0              | 0               | 0             |                     |
| 60245                                | I66652         | 8/1/2002  | 7/23/2002     | -7        | 0               | 0              | 0               | 0             |                     |
| 5446-4                               | I67204         | 8/1/2002  | 7/24/2002     | -6        | 0               | 0              | 0               | 0             |                     |
| 6557-3                               | I69452         | 7/23/2002 | 7/24/2002     | 1         | 0               | 0              | 0               | 0             |                     |
| 1857-6                               | R68683         | 7/25/2002 | 7/24/2002     | -1        | 0               | 0              | 0               | 0             |                     |
| 63641-6                              | I69034         | 8/1/2002  | 7/26/2002     | -4        | 0               | 0              | 0               | 0             |                     |
| 1713-8                               | I65141         | 7/30/2002 | 7/26/2002     | -2        | 0               | 0              | 0               | 0             |                     |
| 8485-2                               | I69682         | 7/30/2002 | 7/26/2002     | -2        | 0               | 0              | 0               | 0             |                     |
| 2470-8                               | I69588         | 7/31/2002 | 7/26/2002     | -3        | 0               | 0              | 0               | 0             |                     |
| 1085-2                               | I68947         | 7/26/2002 | 7/26/2002     | 0         | 0               | 0              | 0               | 0             |                     |
| 8482-6                               | I68664         | 7/31/2002 | 7/26/2002     | -3        | 0               | 0              | 0               | 0             |                     |
| 1741-6                               | I65475         | 8/9/2002  | 7/31/2002     | -7        | 0               | 0              | 0               | 0             |                     |
| 8599-6                               | I67584         | 8/1/2002  | 7/31/2002     | -1        | 0               | 0              | 0               | 0             |                     |
| 5143-2                               | I69579         | 8/8/2002  | 7/31/2002     | -6        | 0               | 0              | 0               | 0             |                     |
| 61418-6                              | I69694         | 7/31/2002 | 7/31/2002     | 0         | 0               | 0              | 0               | 0             |                     |
| 1858-6                               | I69718         | 8/2/2002  | 7/31/2002     | -2        | 0               | 0              | 0               | 0             |                     |
| 41132                                | I67368         | 8/15/2002 | 8/5/2002      | -8        | 0               | 0              | 0               | 0             |                     |
| 1087-2                               | I65822         | 8/14/2002 | 8/5/2002      | -7        | 0               | 0              | 0               | 0             |                     |
| 9027-2                               | I65823         | 8/14/2002 | 8/5/2002      | -7        | 0               | 0              | 0               | 0             |                     |
| 5509-2                               | I69884         | 8/5/2002  | 8/5/2002      | 0         | 0               | 0              | 0               | 0             |                     |
| 4395-6                               | I66343         | 8/15/2002 | 8/5/2002      | -8        | 0               | 0              | 0               | 0             |                     |
| 9019-1                               | I69118         | 8/7/2002  | 8/7/2002      | 0         | 0               | 0              | 0               | 0             |                     |
| 61142-8                              | I69286         | 8/7/2002  | 8/7/2002      | 0         | 0               | 0              | 0               | 0             |                     |